

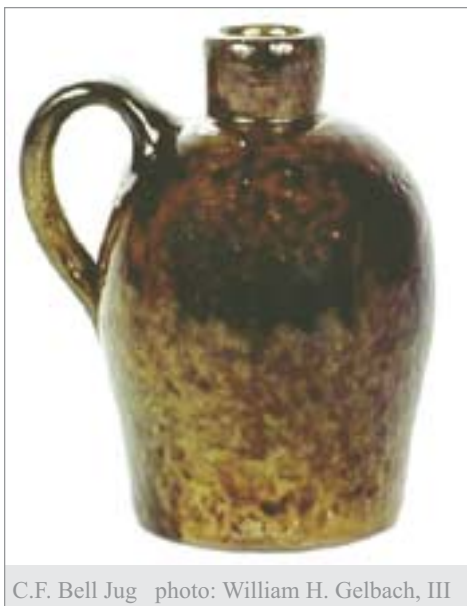
Bell Family Reproductions

The Nicodemus Center for Ceramic Studies will be offering the second piece in its annual series of Bell family reproductions this fall. The series features one reproduction per year in a limited edition of 250. The reproductions are created by ceramist Lynette King of Orrtanna, PA and will be available to Nic. Center members for preordering between August 17 and September 15, 2001. Orders may be placed using the enclosed order card. After September 15, orders for the reproductions will be available to the general public. The cost to Nic. Center members is \$45 per piece.

This year's reproduction is an earthenware butter tub with rope handles. It measures 2.00 inches in height and 5.00 inches in diameter and has three small trivet pads attached to the base. The original was made at the Bell Pottery in Waynesboro during the mid 1800s and is stamped JOHN BELL. This small butter tub shape was a popular form for the Bell Pottery throughout the second half of the 1800s. In addition to John Bell, similar butter tubs were also made by his sons, John W. and Upton M. After Bell's death in 1880, John W. operated the pottery with his brothers Upton, Charles and Victor. When John W. died in 1895, the three Bell brothers continued the operation under Upton's name. They stopped producing pottery in mid 1896 due to financial problems. The Bell pottery shop was later destroyed by fire in December of 1899.



The original piece for this year's reproduction is shown above—a lead- & iron-glazed earthenware butter tub with rope handles, stamped JOHN BELL twice on the base.



C.F. Bell Jug photo: William H. Gelbach, III

Bell Reproduction Series

A number of the small earthenware jugs remain from last year's Bell family reproduction sale. The original was made by John Bell's son, Charles Frederick. It is dated on the base, "Sept. 19, 1884" and signed "C. F. Bell." Charles Frederick (1846–1899) was the fourth of five sons of John and Elizabeth Bell. If you are interested in purchasing one or more of the jugs at the member's reduced price of \$45, please contact the Nic. Center by email, jms48@psu.edu, or by mail, NCCS, P.O. Box 533, Mont Alto, PA 17237.